

# Bacolet Bay

Grenada, The Caribbean

Full  
Plans

# Where is the Caribbean?



# Where is Grenada?



# Where is Bacolet Bay?



- |   |   |    |   |
|---|---|----|---|
| 1 | Grenville                                     | 7  | Aquanauts Scuba Diving Club, True Blue        |
| 2 | Grand Anse Beach                              | 8  | Grand Etang Lake and Forest Reserve           |
| 3 | Point Salines International Airport           | 9  | Horizon Yacht Charters                        |
| 4 | Grenada Golf & Country Club                   | 10 | Gouyave - Friday Fish @ Gouyave               |
| 5 | St George's                                   | 11 | Proposed Four Seasons Resort and Golf Courses |
| 6 | Aquanauts Scuba Diving Club, Grand Anse Beach | 12 | Botanical Gardens                             |

# Site Plan



# Hotel Cottage

Includes:

- Bedroom
- Dressing Room
- Bathroom
- Plunge Pool with water feature
- Terrace



Gross Internal Area: 482 sqft

Gross Terrace Area: 143 sqft

Pool Area: 239 sqft

Total Gross Area: 864 sqft



# One Bedroom Villa

Includes:

- Living Area
- Kitchen
- Bedroom
- Walk-in Wardrobe
- En-suite Bathroom
- Toilet
- Patio
- Plunge Pool
- Entrance Hall



Gross Internal Area: 702 sqft

Gross Terrace Area: 447 sqft

Pool Area: 200 sqft

**Gross Total Area = 1349 sqft**



# Two Bedroom Apartment

## Marlin Apartments (Blocks A-E)

Ground Floor:

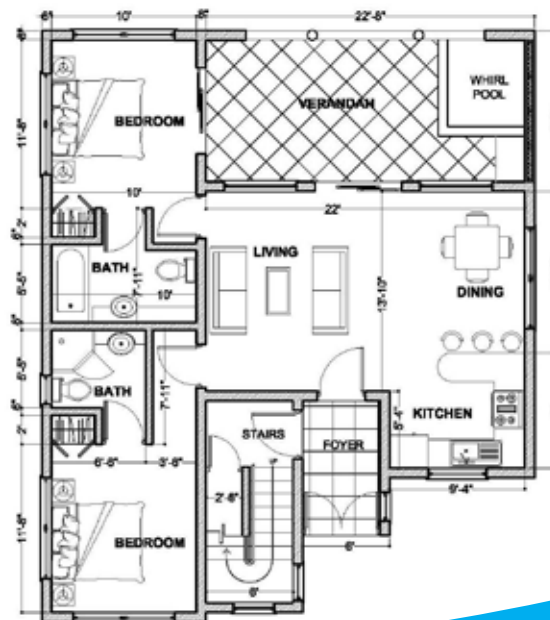
- Open plan Living / Dining Area
- Kitchen
- 2 Bedrooms
- 2 En-suite Bathrooms
- Verandah
- Plunge Pool
- Entrance Hall

Gross Internal Area: 865 sqft

Gross Verandah Area: 238 sqft

Common Lobby: 58 sqft

**Total Gross Area: 1103sqft**



# Two Bedroom Apartment

## Marlin Apartments (Blocks A-E)

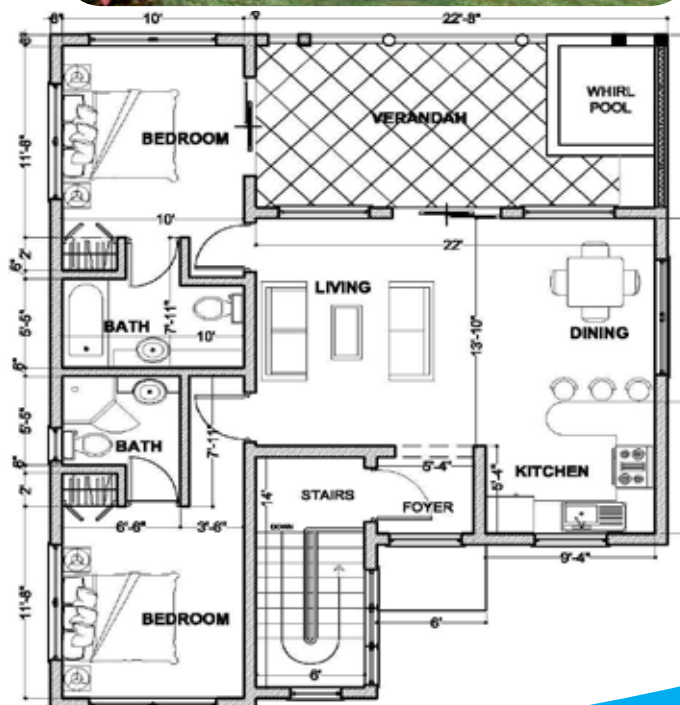
### First Floor

- Living / Dining Area
- Kitchen
- 2 Bedrooms
- 2 En-suite Bathrooms
- Patio
- Plunge Pool
- Balcony / Terrace
- Entrance Hall

Gross Internal Area: 992 sqft

Gross Verandah Area: 238 sqft

**Total Gross Area: 1230 sqft**



# Two Bedroom Apartment

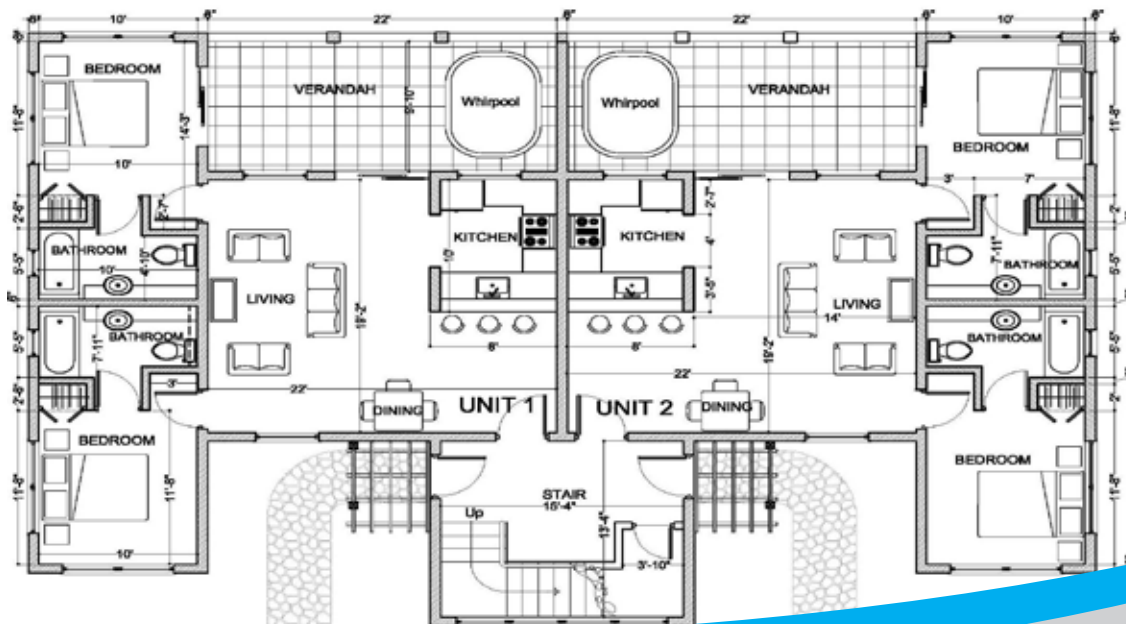
## Dolphin Apartments (Blocks F-K)

- Living / Dining Area
- Kitchen
- 2 Bedrooms
- 2 En-suite Bathrooms
- Verandah
- Plunge Pool
- Entrance Hall

Gross Internal Area: 992 sqft

Gross Verandah Area: 231 sqft

**Total Gross Area: 1223 sqft**



# Two Bedroom Villa

Includes:

- Open plan living/dining area
- Kitchen
- 2 bedrooms each with walk-in wardrobes
- 2 En-suite bathrooms with external shower courts
- Open and covered terrace
- Private Pool
- Decking area with gazebo for shade

Gross Internal Area: 1251 sqft

Gross Terrace Area: 1041 sqft

Pool Area: 137 sqft

External Shower: 218 sqft

**Total Gross Area: 2647 sqft**



# Next Steps



To reserve a unit please contact your consultant or fill in a copy of the enquiry form on the following page.

 01865 202 700

 [info@propertyfrontiers.com](mailto:info@propertyfrontiers.com)

for mortgage information please contact

 [info@frontiersfs.com](mailto:info@frontiersfs.com)